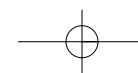
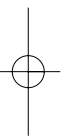
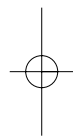
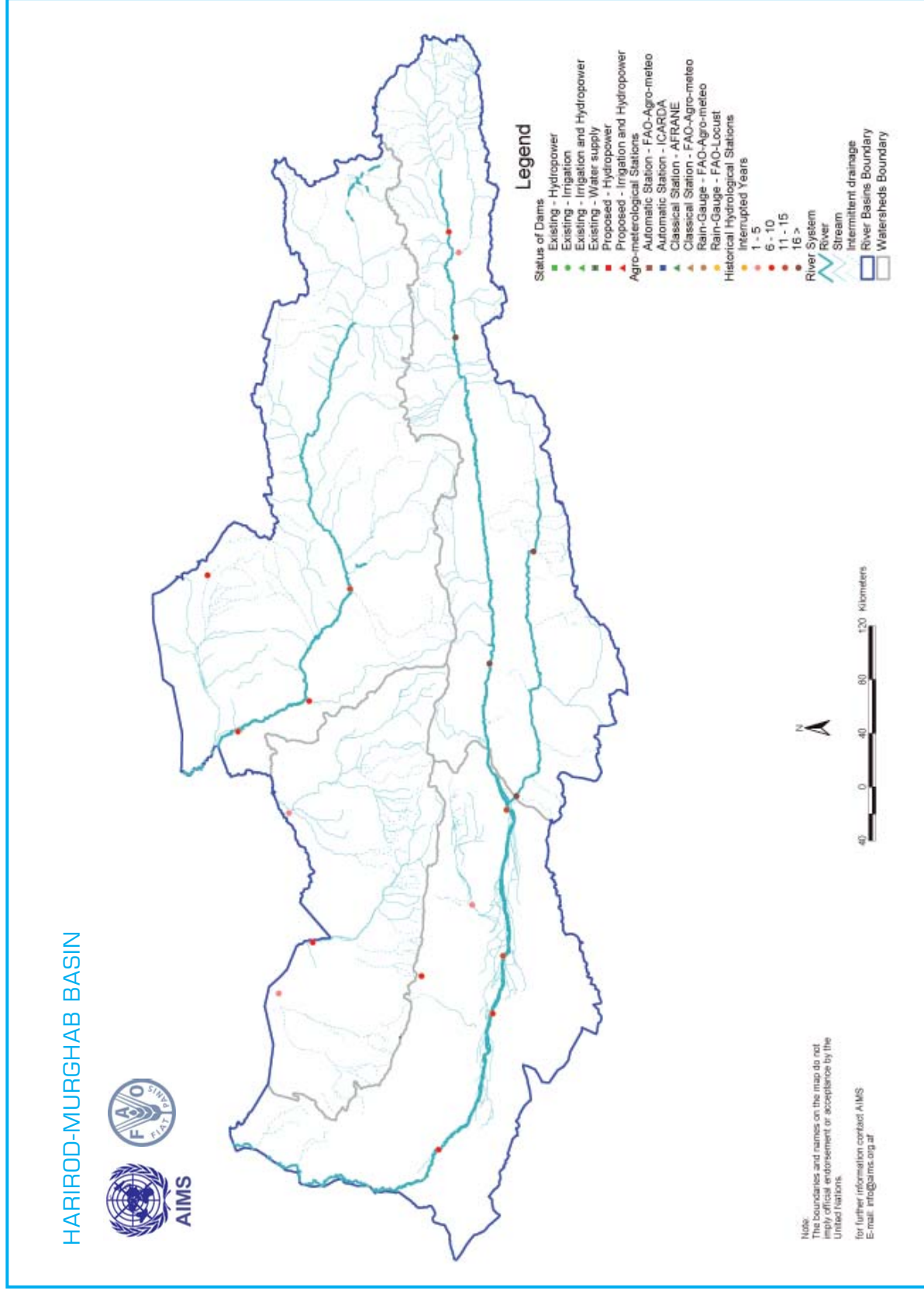
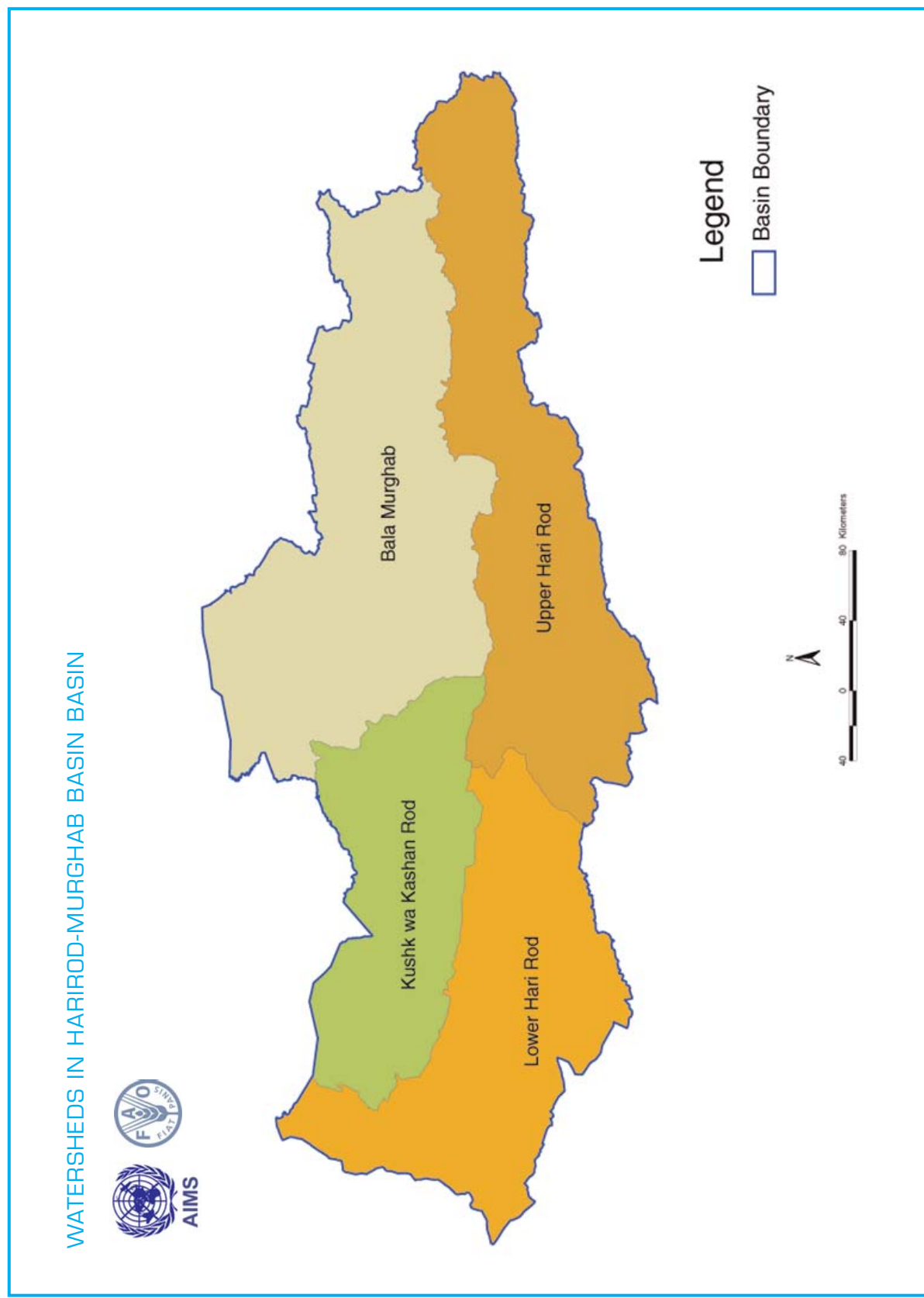


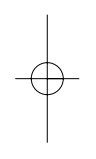
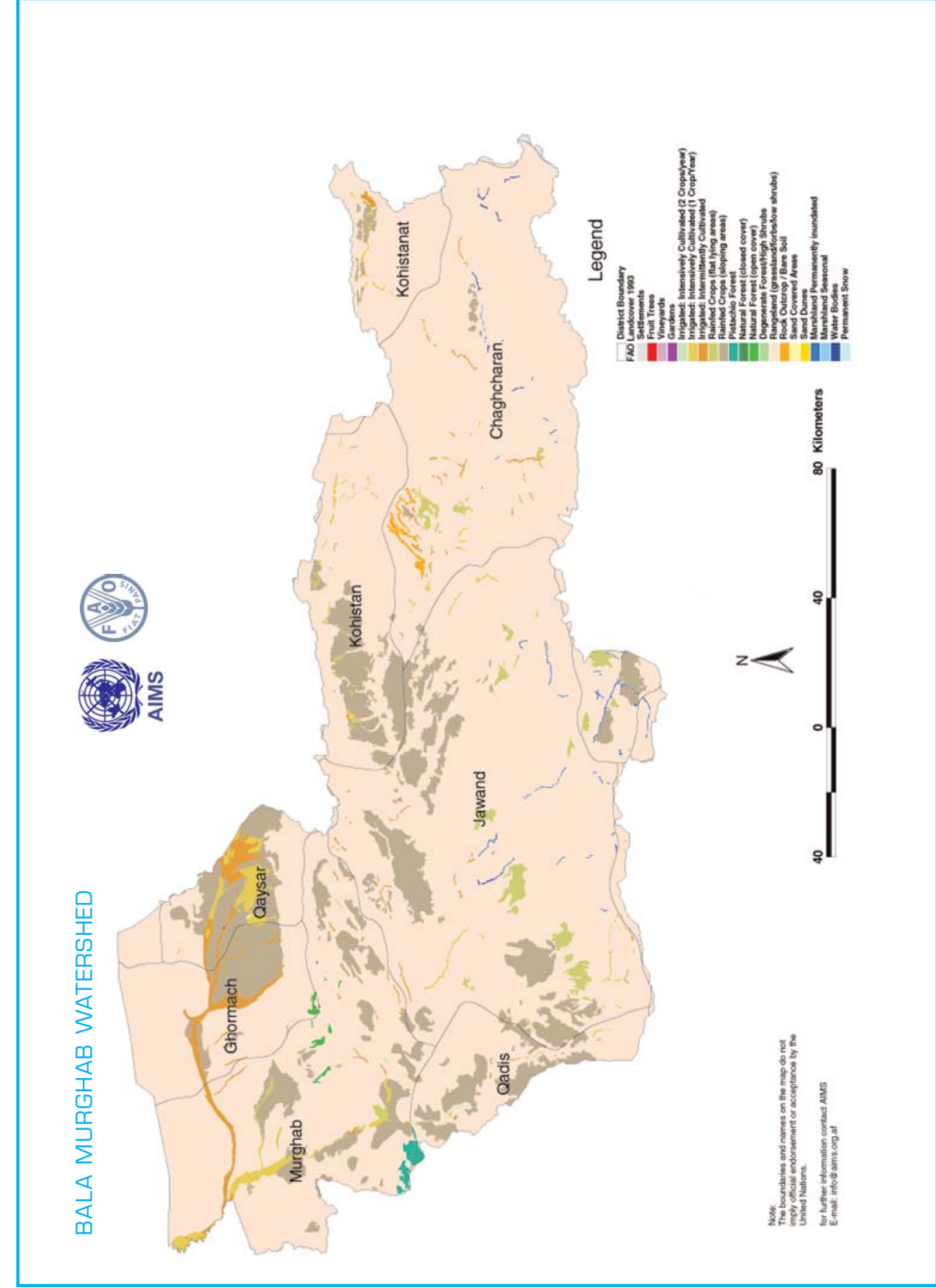
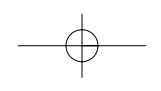
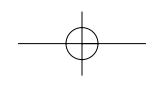
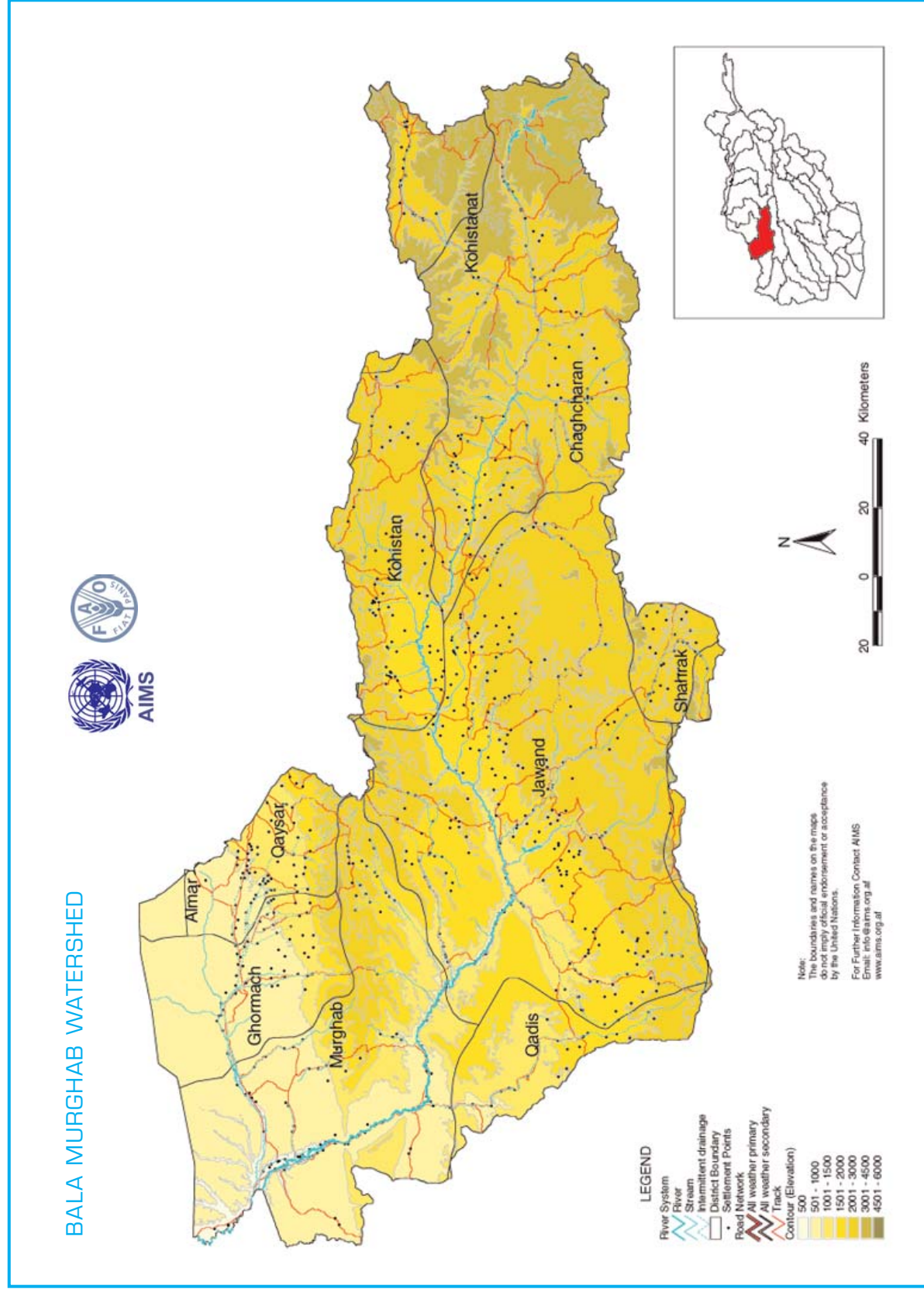
# HARRIOD- MURGHAB BASIN

## PART II

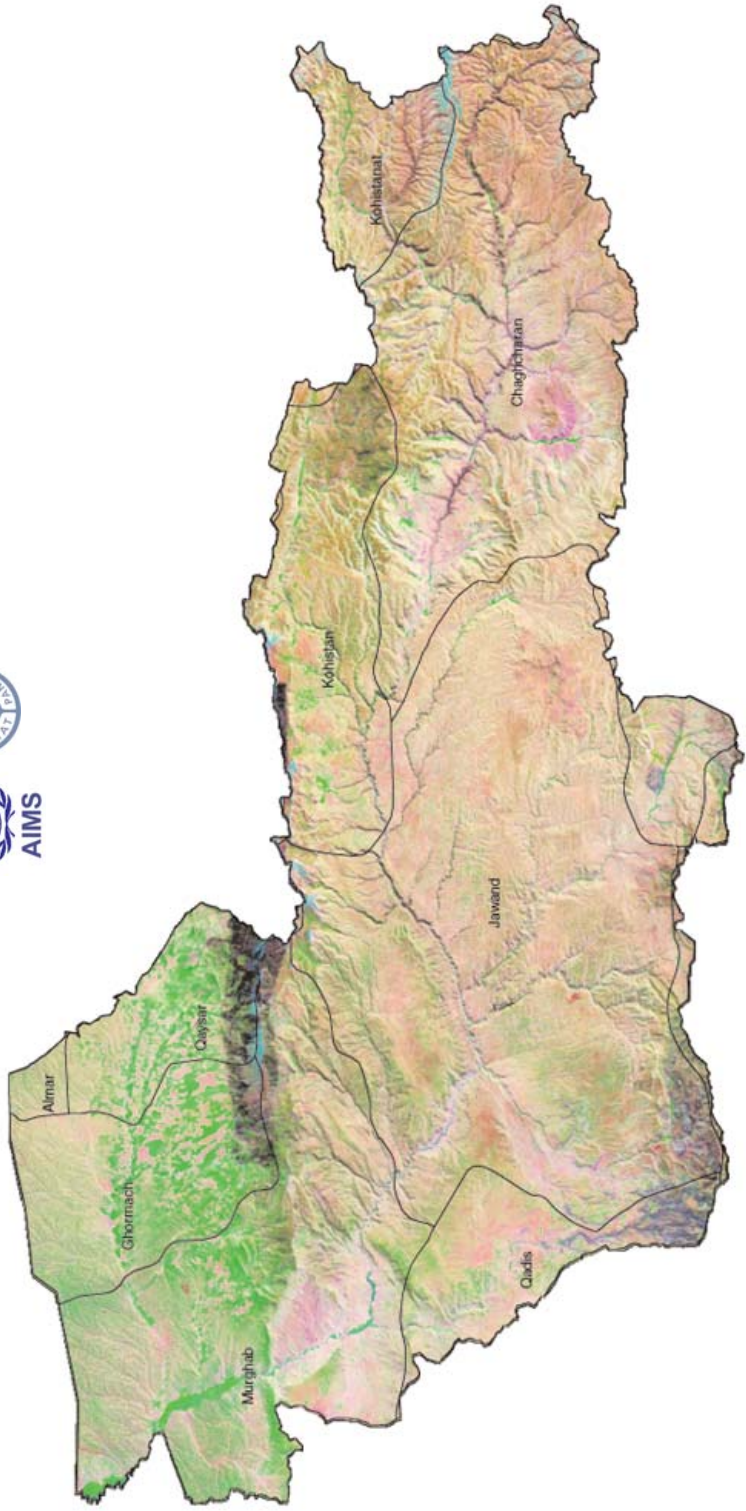
1. Watershed in Harrior-Murghab Basin
2. Harrior-Murghab Basin
3. Bala Murghab
4. Kushk wa Kashan Rod
5. Lower Hari Rod
6. Upper Hari Rod







### BALA MURGHAB WATERSHED

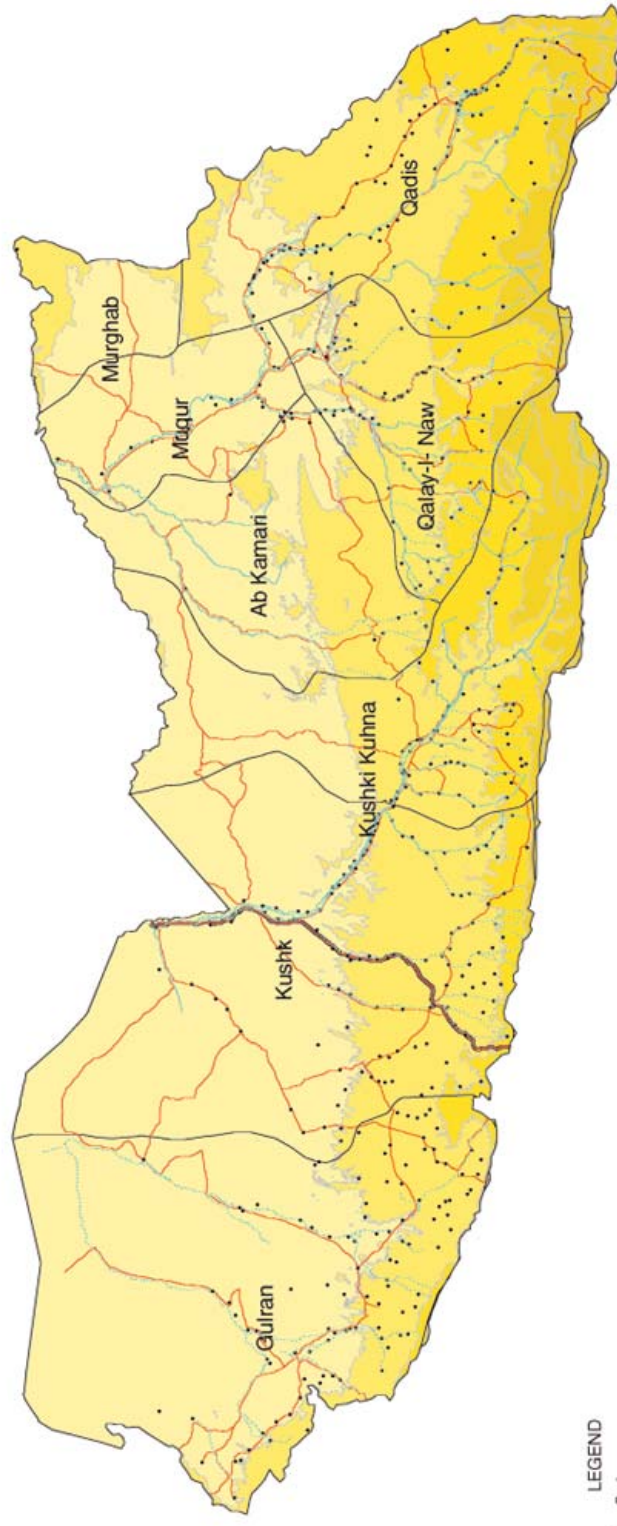


Note: The boundaries and names on the maps do not imply official endorsement or acceptance by the United Nations.  
For Further Information Contact AIMS  
Email: info@aims.org.af  
www.aims.org.af



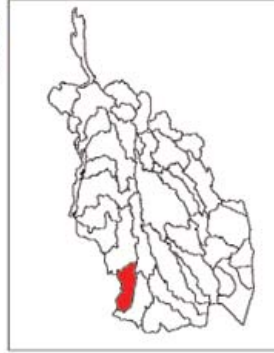
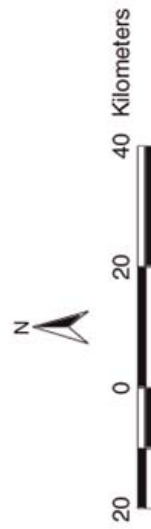
Source: Landsat-5 TM scenes acquired within one or two years prior to the final image. The final image is a composite of filtered Landsat TM 7, 4, and 2 composited as R, G, and B respectively.

### KUSHK WA KASHAN ROD WATERSHED

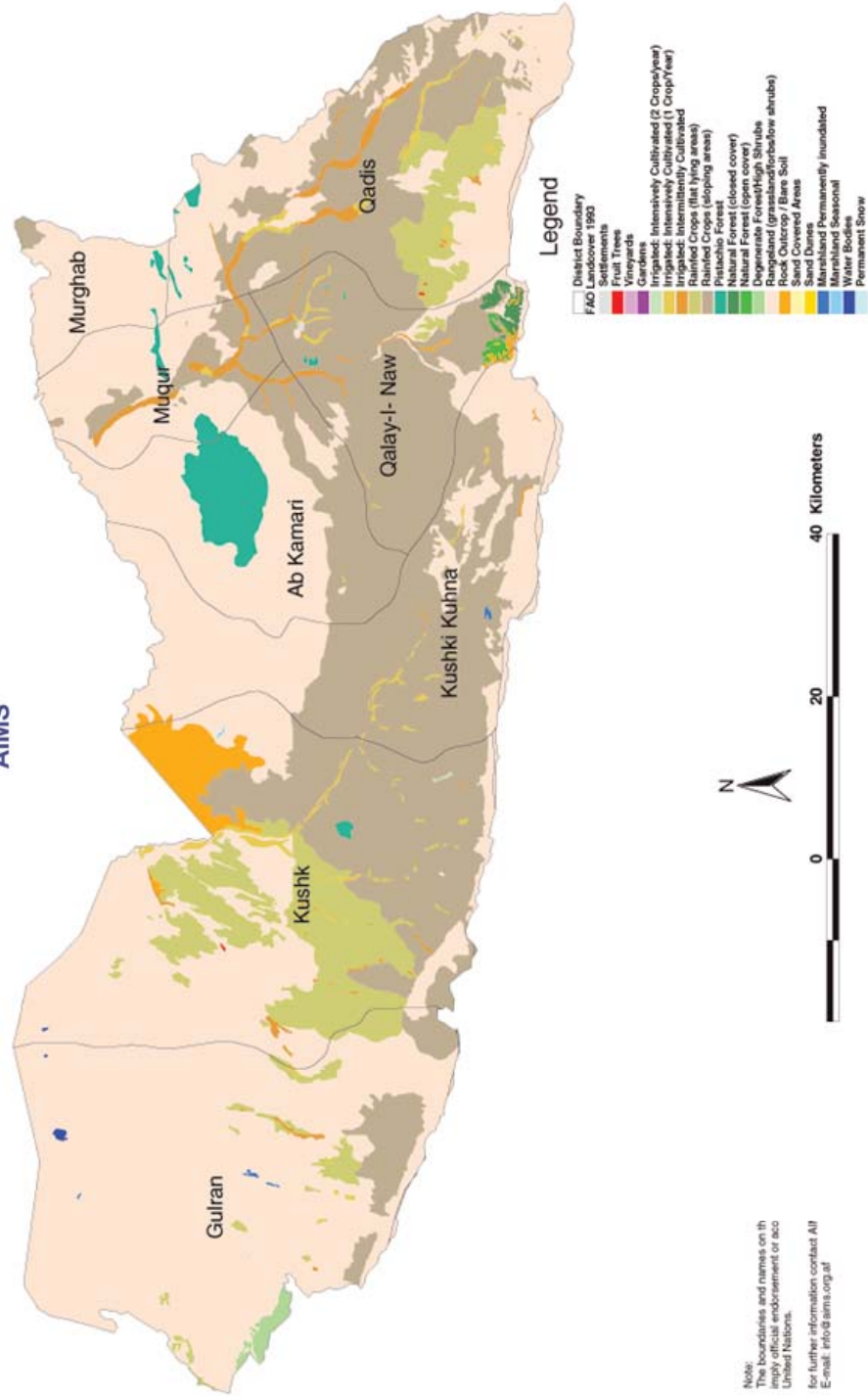


- LEGEND**
- River System
  - River
  - Stream
  - Intermittent di
  - District Bound
  - Settlement P
  - Road Network
  - All weather pr
  - All weather sh
  - Track
  - Contour (Elevation)
- |             |
|-------------|
| 501 - 1000  |
| 1001 - 1500 |
| 1501 - 2000 |
| 2001 - 3000 |
| 3001 - 4500 |
| 4501 - 6000 |

Note: The boundaries and names on the maps do not imply official endorsement or acceptance by the United Nations.  
For Further Information Contact AIMS  
Email: info@aims.org.af  
www.aims.org.af



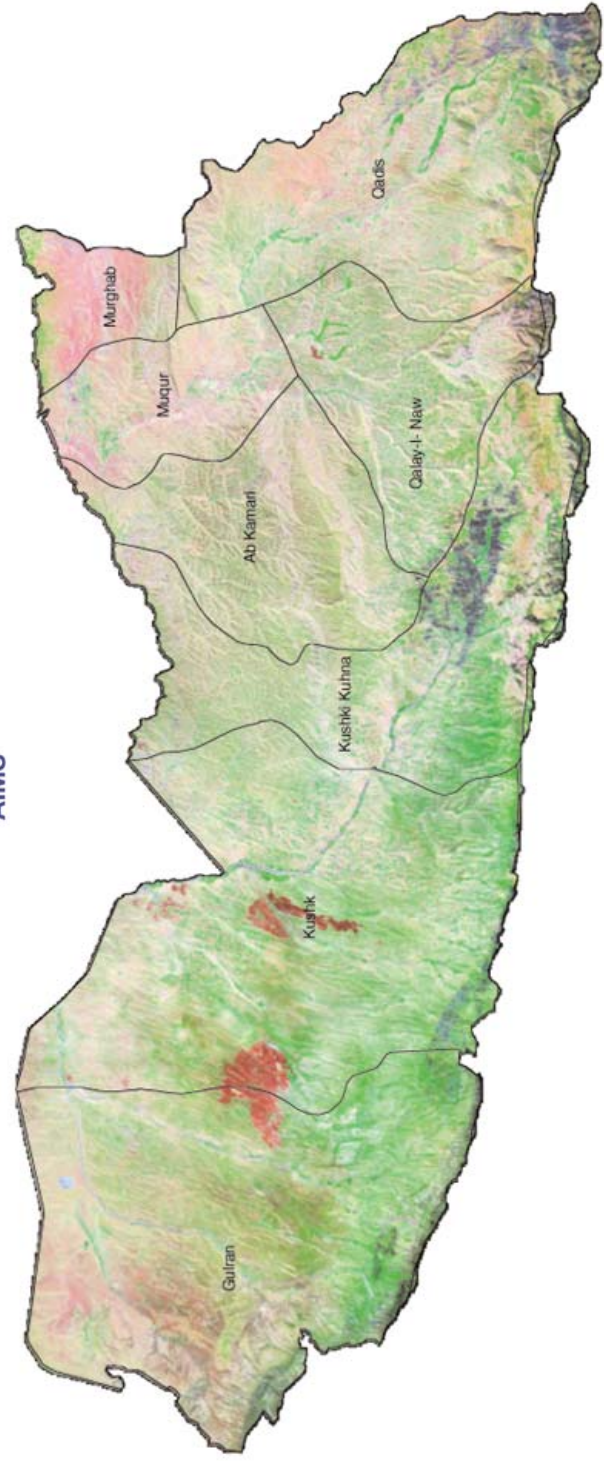
KUSHK WA KASHAN ROD WATERSHED



Note:  
The boundaries and names on this map do not imply official endorsement or acceptance by the United Nations.  
For further information contact AIMS  
E-mail: info@aims.org.af



KUSHK WA KASHAN ROD WATERSHED



Note:  
The boundaries and names on the maps do not imply official endorsement or acceptance by the United Nations.  
For Further Information Contact AIMS  
Email: info@aims.org.af  
www.aims.org.af



Source:  
Landsat-5 TM scenes acquired within one or two years of the date of the map. The scenes are composites of three Landsat TM 7, 4, and 5 scenes. The scenes are labeled as 1, 2, and 3 and 2 composed as A, G, and B respectively.

